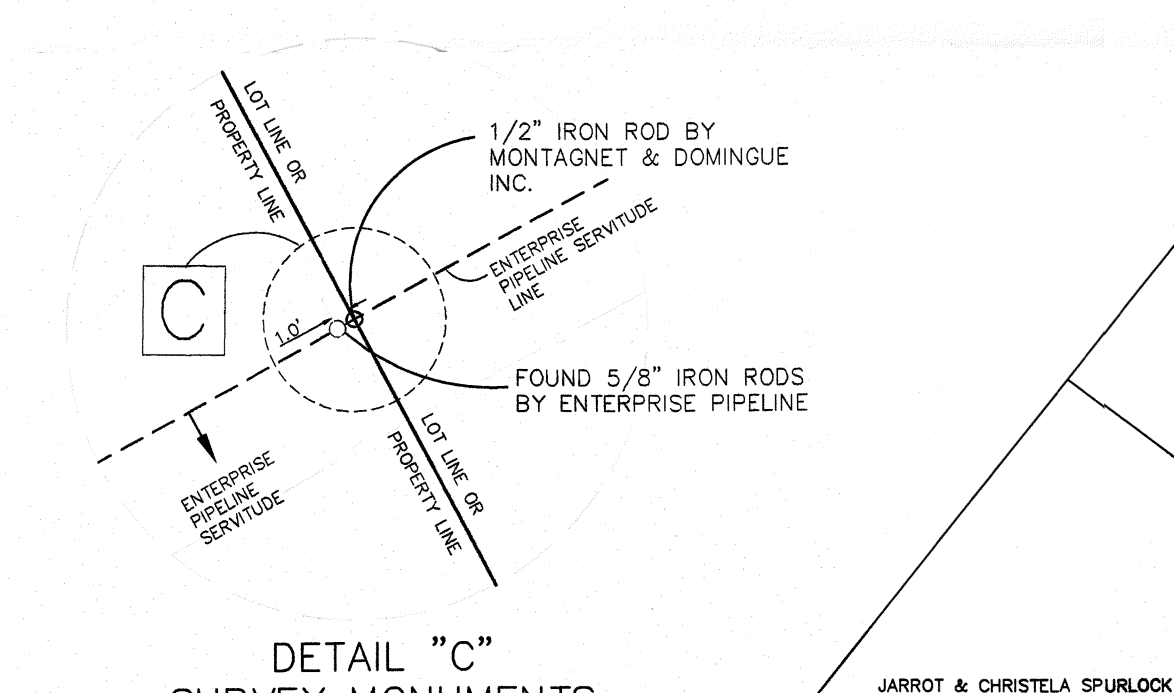
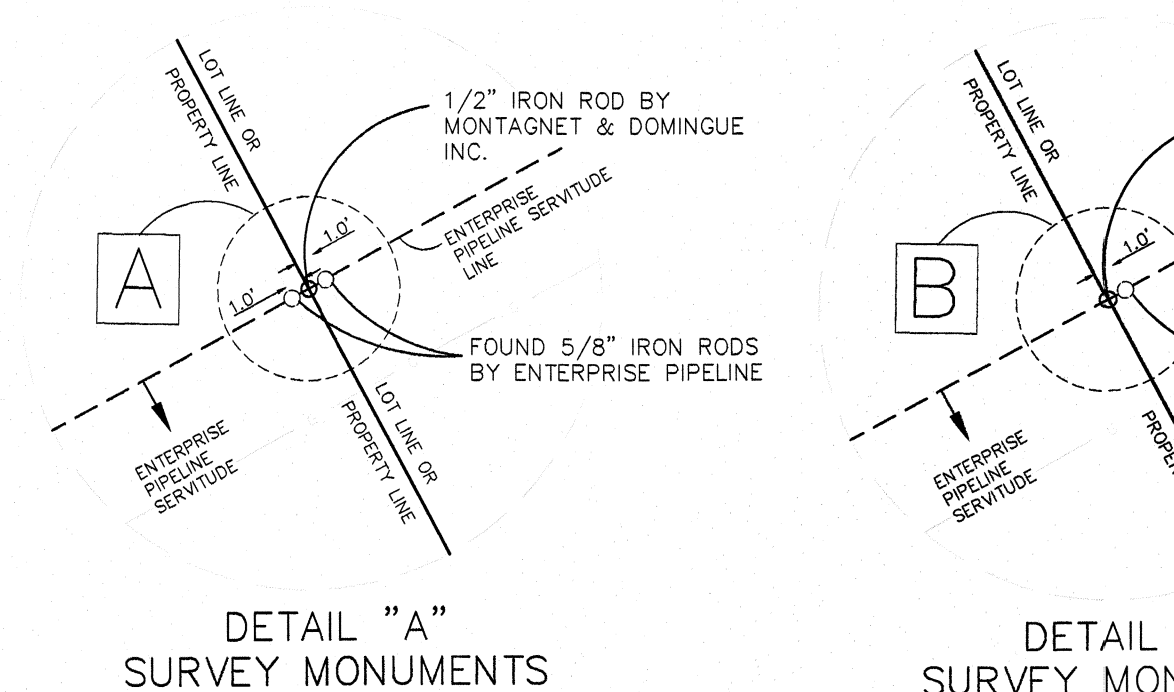
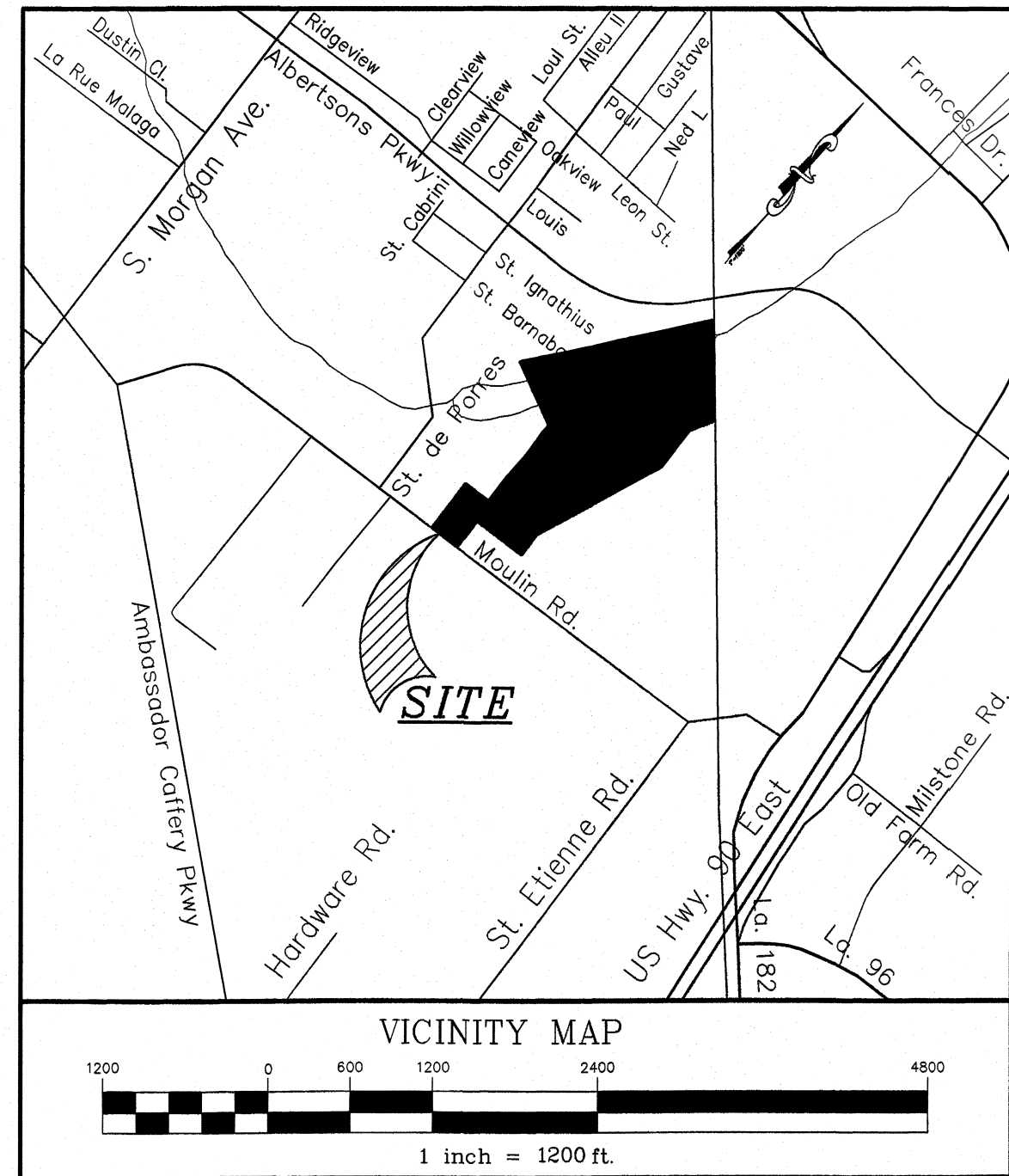
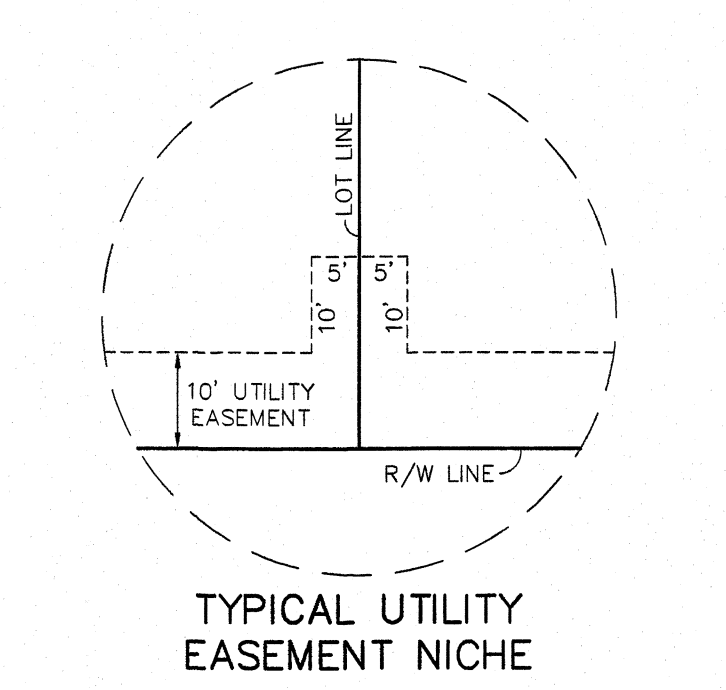


DATE	DESCRIPTIONS	BY
2/14/18	LOT LINE BETWEEN LOTS 40 & 41	AEM
8/25/17	ADDED SURVEY MONUMENTS - 5/8" IRON RODS SET BY MORRIS HEBERT, INC FOR ENTERPRISE PIPELINE - LOTS 9-22 & 39-43 SEE DETAIL A, B, & C	AEM
7/20/15	LOT 69 DIMENSION FROM 64.81 TO 78.55	AEM
4/29/15	CORRECTED DIMENSIONS FOR LOTS A, 1, 3, 4, 8, 9, 32-38, 45, 50, 56, 58, 64, 68 & 69	AEM
4/16/15	DIMENSIONS ON LOTS 6, 56 & 57	AEM



REFERENCE PLAT:  
MAURICE LOUIS ST. JULIEN TRUST  
BY: WL J. GUIDRY, P.L.S. NO. 4792  
DATE: NOVEMBER 15, 2010

NOTES:  
BEARINGS ARE BASED ON THE LOUISIANA COORDINATE SYSTEM OF 1983 (CORS 96), SOUTH ZONE.  
SIDE SETBACKS OF ZERO AND 6' ARE SHOWN ON LOTS 45, 47, 48 & 50.  
\*THIS SURVEY WAS CONDUCTED BY ME OR UNDER MY DIRECT SUPERVISION BASED ON STANDARDS FOR CLASS C SURVEYS IN ACCORDANCE WITH THE MINIMUM STANDARDS FOR PROPERTY BOUNDARY SURVEYS AS ADOPTED BY THE BOARD OF REGISTRATION FOR PROFESSIONAL ENGINEERS AND LAND SURVEYORS.

THIS PROPERTY IS PARTIALLY LOCATED IN A FLOOD HAZARD AREA ACCORDING TO THE REVISED PRELIMINARY F.E.M.A. FLOOD INSURANCE RATE MAP DATED: SEPTEMBER 6, 2011 (ZONES AE-FLOODWAY, AE, X500 & X) Panel No. 22055C0200 J. BFE: 25.0

THIS PROPERTY IS PARTIALLY LOCATED IN A FLOOD HAZARD AREA ACCORDING TO THE EFFECTIVE F.E.M.A. FLOOD INSURANCE RATE MAP DATED: JANUARY 19, 1996 (ZONES AE & X) Panel No. 22055C0070 G

ANY STRUCTURE, ENCLOSED ON THREE OR MORE SIDES, BUILT ON PROPERTY LOCATED IN THE ONE HUNDRED YEAR FLOOD ZONE AS DEPICTED ON THIS PLAT SHALL BE ELEVATED SO AS TO INSURE THE LOWEST FLOOR OF SUCH STRUCTURE IS LOCATED AT A MINIMUM OF ONE FOOT ABOVE THE BASE FLOOD ELEVATION HEIGHT OF THAT AREA AT THAT TIME.

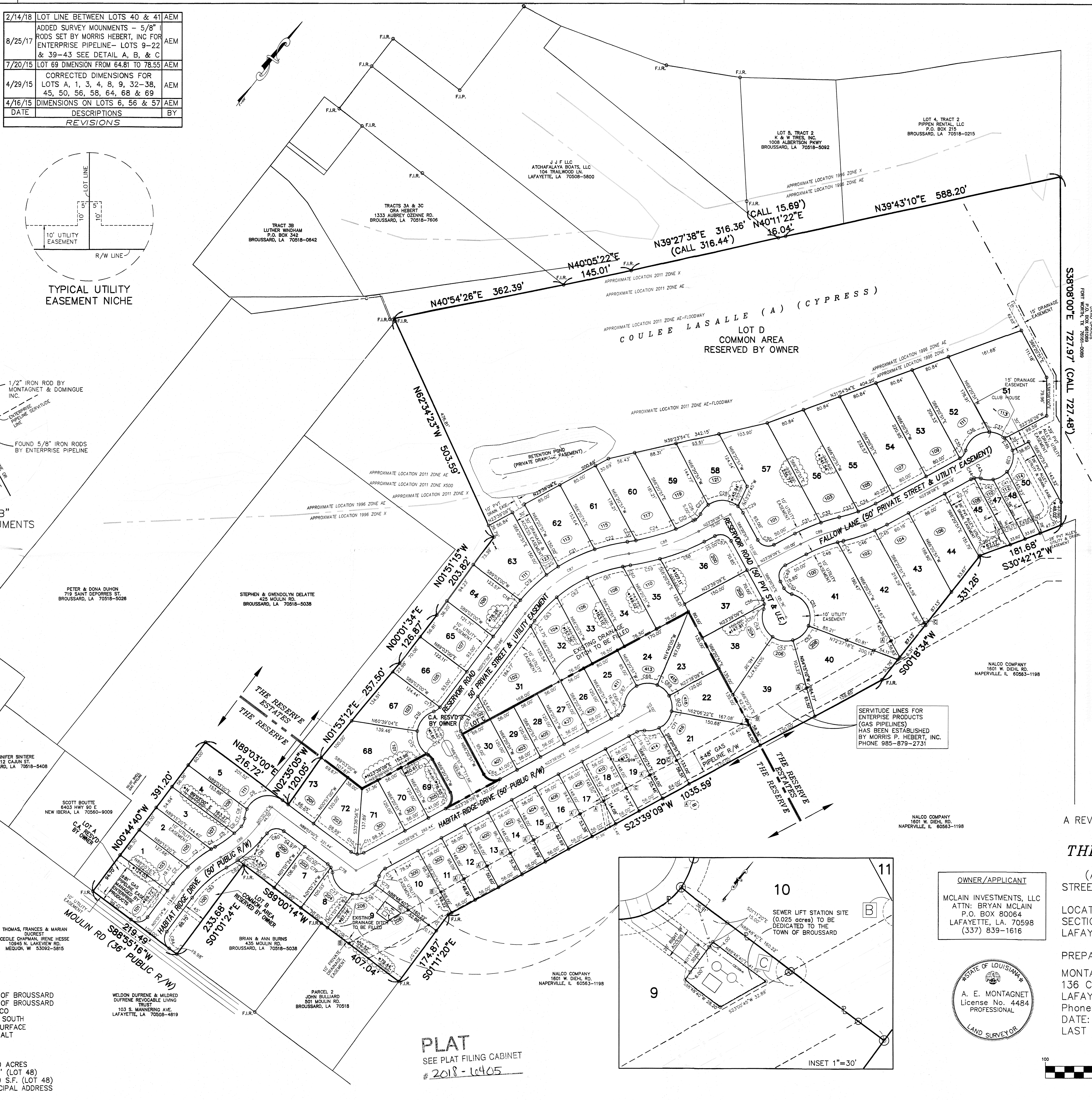
MONTAGNET & DOMINGUE, INC IS NOT RESPONSIBLE FOR ANY EASEMENT, RIGHTS OF WAY OR SERVITUDE'S NOT SHOWN. THIS FIRM HAS DONE NO PUBLIC RECORDS SEARCH TO LOCATE SUCH ITEMS OF RECORD.

LOTS 45, 47, 48 & 50 SETBACKS  
FRONT --- 20'  
SIDE --- 0' AND 6'  
REAR --- 10'

TYPES OF IMPROVEMENTS

WATER	-----	CITY OF BROUSSARD
SEWER	-----	CITY OF BROUSSARD
ELECTRIC	-----	SLEMCO
TELEPHONE	-----	BELL SOUTH
DRAINAGE	-----	SUBSURFACE
ROADWAY	-----	ASPHALT

GENERAL NOTES  
TOTAL NUMBER OF LOTS ----- 71  
TOTAL AREA OF DEVELOPMENT --- 36.40 ACRES  
MINIMUM FRONTAGE ----- 34.01' (LOT 48)  
MINIMUM LOT SIZE ----- 4,699 S.F. (LOT 48)  
----- MUNICIPAL ADDRESS



LOT CURVE DATA			
C1 R=25.00' L=39.25' CB=N43°56'56"E CH=35.34	C2 R=350.00' L=70.38' CB=S38°51'39"W CH=70.48	C3 R=25.00' L=14.04' CB=S55°45'17"W CH=13.86	C4 R=25.00' L=23.00' CB=S33°58'56"E CH=27.01
C5 R=275.00' L=46.65' CB=N43°48'39"E CH=46.60	C6 R=400.00' L=18.06' CB=N31°39'36"W CH=18.06	C7 R=25.00' L=18.06' CB=N43°48'39"E CH=18.06	C8 R=25.00' L=18.06' CB=N43°48'39"E CH=18.06
C9 R=275.00' L=41.44' CB=N35°48'39"E CH=38.95	C10 R=400.00' L=18.06' CB=N31°39'36"W CH=18.06	C11 R=25.00' L=18.06' CB=N43°48'39"E CH=18.06	C12 R=25.00' L=18.06' CB=N43°48'39"E CH=18.06
C13 R=25.00' L=18.06' CB=N43°48'39"E CH=18.06	C14 R=25.00' L=18.06' CB=N43°48'39"E CH=18.06	C15 R=25.00' L=18.06' CB=N43°48'39"E CH=18.06	C16 R=25.00' L=18.06' CB=N43°48'39"E CH=18.06
C17 R=25.00' L=18.06' CB=N43°48'39"E CH=18.06	C18 R=25.00' L=18.06' CB=N43°48'39"E CH=18.06	C19 R=25.00' L=18.06' CB=N43°48'39"E CH=18.06	C20 R=25.00' L=18.06' CB=N43°48'39"E CH=18.06
C21 R=25.00' L=18.06' CB=N43°48'39"E CH=18.06	C22 R=25.00' L=18.06' CB=N43°48'39"E CH=18.06	C23 R=25.00' L=18.06' CB=N43°48'39"E CH=18.06	C24 R=25.00' L=18.06' CB=N43°48'39"E CH=18.06
C25 R=25.00' L=18.06' CB=N43°48'39"E CH=18.06	C26 R=25.00' L=18.06' CB=N43°48'39"E CH=18.06	C27 R=25.00' L=18.06' CB=N43°48'39"E CH=18.06	C28 R=25.00' L=18.06' CB=N43°48'39"E CH=18.06
C29 R=25.00' L=18.06' CB=N43°48'39"E CH=18.06	C30 R=25.00' L=18.06' CB=N43°48'39"E CH=18.06	C31 R=25.00' L=18.06' CB=N43°48'39"E CH=18.06	C32 R=25.00' L=18.06' CB=N43°48'39"E CH=18.06
C33 R=25.00' L=18.06' CB=N43°48'39"E CH=18.06	C34 R=25.00' L=18.06' CB=N43°48'39"E CH=18.06	C35 R=25.00' L=18.06' CB=N43°48'39"E CH=18.06	C36 R=25.00' L=18.06' CB=N43°48'39"E CH=18.06
C37 R=25.00' L=18.06' CB=N43°48'39"E CH=18.06	C38 R=25.00' L=18.06' CB=N43°48'39"E CH=18.06	C39 R=25.00' L=18.06' CB=N43°48'39"E CH=18.06	C40 R=25.00' L=18.06' CB=N43°48'39"E CH=18.06
C41 R=25.00' L=18.06' CB=N43°48'39"E CH=18.06	C42 R=25.00' L=18.06' CB=N43°48'39"E CH=18.06	C43 R=25.00' L=18.06' CB=N43°48'39"E CH=18.06	C44 R=25.00' L=18.06' CB=N43°48'39"E CH=18.06
C45 R=25.00' L=18.06' CB=N43°48'39"E CH=18.06	C46 R=25.00' L=18.06' CB=N43°48'39"E CH=18.06	C47 R=25.00' L=18.06' CB=N43°48'39"E CH=18.06	C48 R=25.00' L=18.06' CB=N43°48'39"E CH=18.06
C49 R=25.00' L=18.06' CB=N43°48'39"E CH=18.06	C50 R=25.00' L=18.06' CB=N43°48'39"E CH=18.06	C51 R=25.00' L=18.06' CB=N43°48'39"E CH=18.06	C52 R=25.00' L=18.06' CB=N43°48'39"E CH=18.06
C53 R=25.00' L=18.06' CB=N43°48'39"E CH=18.06	C54 R=25.00' L=18.06' CB=N43°48'39"E CH=18.06	C55 R=25.00' L=18.06' CB=N43°48'39"E CH=18.06	C56 R=25.00' L=18.06' CB=N43°48'39"E CH=18.06
C57 R=25.00' L=18.06' CB=N43°48'39"E CH=18.06	C58 R=25.00' L=18.06' CB=N43°48'39"E CH=18.06	C59 R=25.00' L=18.06' CB=N43°48'39"E CH=18.06	C60 R=25.00' L=18.06' CB=N43°48'39"E CH=18.06
C61 R=25.00' L=18.06' CB=N43°48'39"E CH=18.06	C62 R=25.00' L=18.06' CB=N43°48'39"E CH=18.06	C63 R=25.00' L=18.06' CB=N43°48'39"E CH=18.06	C64 R=25.00' L=18.06' CB=N43°48'39"E CH=18.06
C65 R=25.00' L=18.06' CB=N43°48'39"E CH=18.06	C66 R=25.00' L=18.06' CB=N43°48'39"E CH=18.06	C67 R=25.00' L=18.06' CB=N43°48'39"E CH=18.06	C68 R=25.00' L=18.06' CB=N43°48'39"E CH=18.06
C69 R=25.00' L=18.06' CB=N43°48'39"E CH=18.06	C70 R=25.00' L=18.06' CB=N43°48'39"E CH=18.06	C71 R=25.00' L=18.06' CB=N43°48'39"E CH=18.06	C72 R=25.00' L=18.06' CB=N43°48'39"E CH=18.06
C73 R=25.00' L=18.06' CB=N43°48'39"E CH=18.06	C74 R=25.00' L=18.06' CB=N43°48'39"E CH=18.06	C75 R=25.00' L=18.06' CB=N43°48'39"E CH=18.06	C76 R=25.00' L=18.06' CB=N43°48'39"E CH=18.06
C77 R=25.00' L=18.06' CB=N43°48'39"E CH=18.06	C78 R=25.00' L=18.06' CB=N43°48'39"E CH=18.06	C79 R=25.00' L=18.06' CB=N43°48'39"E CH=18.06	C80 R=25.00' L=18.06' CB=N43°48'39"E CH=18.06
C81 R=25.00' L=18.06' CB=N43°48'39"E CH=18.06	C82 R=25.00' L=18.06' CB=N43°48'39"E CH=18.06	C83 R=25.00' L=18.06' CB=N43°48'39"E CH=18.06	C84 R=25.00' L=18.06' CB=N43°48'39"E CH=18.06
C85 R=25.00' L=18.06' CB=N43°48'39"E CH=18.06	C86 R=25.00' L=18.06' CB=N43°48'39"E CH=18.06	C87 R=25.00' L=18.06' CB=N43°48'39"E CH=18.06	C88 R=25.00' L=18.06' CB=N43°48'39"E CH=18.06
C89 R=25.00' L=18.06' CB=N43°48'39"E CH=18.06	C90 R=25.00' L=18.06' CB=N43°48'39"E CH=18.06	C91 R=25.00' L=18.06' CB=N43°48'39"E CH=18.06	C92 R=25.00' L=18.06' CB=N43°48'39"E CH=18.06
C93 R=25.00' L=18.06' CB=N43°48'39"E CH=18.06	C94 R=25.00' L=18.06' CB=N43°48'39"E CH=18.06	C95 R=25.00' L=18.06' CB=N43°48'39"E CH=18.06	C96 R=25.00' L=18.06' CB=N43°48'39"E CH=18.06
C97 R=25.00' L=18.06' CB=N43°48'39"E CH=18.06	C98 R=25.00' L=18.06' CB=N43°48'39"E CH=18.06	C99 R=25.00' L=18.06' CB=N43°48'39"E CH=18.06	C100 R=25.00' L=18.06' CB=N43°48'39"E CH=18.06

CENTERLINE OF ROAD CURVE DATA

OWNER/APPLICANT  
MCLAIN INVESTMENTS, LLC  
ATTN: BRYAN MCLAIN  
P.O. BOX 80064  
LAFAYETTE, LA. 70598  
(337) 839-1616



A REVISED FINAL MAP OF SURVEY SHOWING  
**THE RESERVE & THE RESERVE ESTATES**  
(FORMERLY MOULIN PARK)  
(A RESIDENTIAL DEVELOPMENT)  
STREET ADDRESS: MOULIN RD.  
BROUSSARD, LA 70518  
LOCATED IN THE CITY OF BROUSSARD,  
SECTION 34, T-10-S, R-5-E;  
LAFAYETTE PARISH, LOUISIANA

PREPARED BY: *A. E. Montagnet*  
ANDRE E. MONTAGNET, P.L.S. # 4484, C.E. 18687  
MONTAGNET AND DOMINGUE, INC.  
136 CLARA VON DRIVE  
LAFAYETTE, LOUISIANA 70503  
Phone: (337)981-2130 Fax: (337)981-3282  
DATE: OCTOBER 30, 2014 SCALE: 1"=100'  
LAST REVISED DATE: FEBRUARY 14, 2018

GRAPHIC SCALE  
1 inch = 100 ft.